

TECHNICAL SPECIFICATIONS

Country of Origin:	New Zealand	Pile Weight:	1290g/m ²
Colours:	11 Standard	Backing:	Jute
Yarn:	100% Wool	Installation Method:	Conventionally Laid
Surface Texture:	Cut Pile Twist	Roll Width:	3.66
Gauge:	31.5/10cm (1/8th Gauge)	Secondary Backing:	Jute
Product Thickness:	13.5 (+/- 1.0mm)mm	Pattern Repeat:	Not Applicable

PERFORMANCE

Anti-Static:	(AATCC 134) <3.5KV at 21°C & 20% Relative Humidity
Flammability:	CRF 7.2kW/m ² (Conventionally Laid)~
ACCS Rating:	Residential Extra Heavy Duty - 5 Star, Contract Medium Duty - 2 Star
Contract Guarantee:	5 Year Contract Guarantee Available on Request*
Smoke Value:	67% minutes (Conventionally Laid)
Contract Warranty:	15 Year Wool Limited Residential Guarantee*

SUSTAINABILITY

PVC Minimisation:	PVC Free
Indoor Air Quality:	Green Building Council Compliant for VOC emission rate limits
Green Star:	Environmental Certification Scheme (ECS). Level 4 Maximum Points - Certificate #25062
Accreditation:	Manufactured under a quality and environmental system certified and complying with ISO 9001 and ISO 14001 by an accredited certification body.

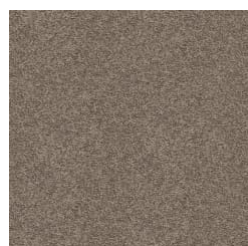


Declare.



Green Building Council Australia
Member

Enchant



749
STONEWASHED



576
DUSTY PLAIN



705
SILVER CHALICE



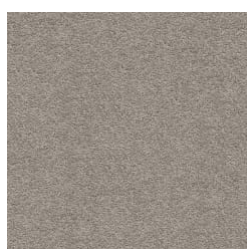
565
PUDDLE



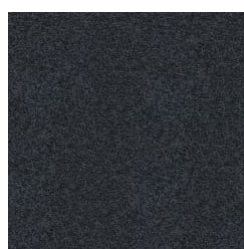
905
GREYWACKE



525
RAW COTTON



740
PELACO



890
MIDNIGHT BLUE



550
ALMOND BEIGE



580
WOODLAND



760
CONCRETE

Specifications and colourations are subject to manufacturing tolerances. As part of the GH Commercial continuous improvement program, GH Commercial reserves the right to change the specifications of or delete colours of this product without notice. While all care is taken, product images may vary in colour due to possible printing process variations. Images do not seek to duplicate the exact visual appearance, but serve merely as a guide or point of reference.

All Godfrey Hirst carpets must be installed in accordance with the latest AS2455 and any relevant Godfrey Hirst Installation Instructions. ~Test results and certificates are available on request.

*This product comes with a manufacturer's guarantee for new carpet installed indoors in owner occupied premises, if properly installed and maintained. This guarantee is in addition to consumers' rights under the statutory consumer guarantee provisions in the Australian Consumer Law, which may exceed the rights under this Guarantee. The amount recoverable under the guarantee decreases five years. For full information in respect to the scope and limitations of this guarantee, please refer to the full terms and conditions available from your retailer, by calling 1300 444 778, or by downloading from www.godfreyhirst.com.