

# Distressed



## TECHNICAL SPECIFICATIONS

Colours:	12 Standard
Yarn:	80% Wool / 20% Synthetic
Surface Texture:	Patterned Cut Pile
Product Thickness:	10mm
Pile Weight:	1290g/m <sup>2</sup>
Backing:	Polypropylene Weft
Availability Options:	
Installation Method:	Dual Bond Recommended
Installation Options:	Straight
Notes:	Available in 4 qualities - 34oz, 38oz 42oz and 48oz. Fast Track® minimum order quantity applies = 20lm (73m <sup>2</sup> )
Type:	Woven Carpet
Roll Width:	3.66
Pattern Repeat:	Width: 365.76cm Length: 381.00cm
Pitch & Beat Up:	Pitch: 27.6/10 (7/inch) Beat Up: 31.5/10cm (8/inch)

## PERFORMANCE

Anti-Static:	(AATCC 134) <3.5KV at 21°C & 20% Relative Humidity
Flammability:	CRF 4.5kW/m <sup>2</sup> (Dual Bond)#
Colourfast to light:	(ISO 105-B-02-1994) 5-6
Light Reflectance:	Available on Request
Stain Resistance:	Natural Wool Fibre Stain Resistance
ACCS Rating:	Contract Heavy Duty & Stairs
Contract Warranty:	7 Year Contract Guarantee Available on Request*
Smoke Value:	750% minutes (Dual Bond)
Recommended Adhesive:	Refer to the GH Commercial Carpet Installation Instructions

## SUSTAINABILITY

PVC Minimisation:	PVC Free
Indoor Air Quality:	Green Building Council Compliant for VOC emission rate limits
Green Star:	Environmental Certification Scheme (ECS) Level 4 Maximum Points
Accreditation:	Manufactured under a quality and environmental system certified and complying with ISO 9001 and ISO 14001 by an accredited certification body.



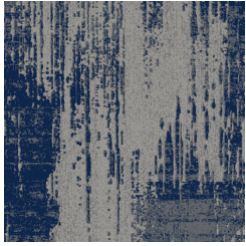
Specifications and colourations are subject to manufacturing tolerances. As part of the GH Commercial continuous improvement program, GH Commercial reserves the right to change the specifications of or delete colours of this product without notice. While all care is taken, product images may vary in colour due to possible printing process variations. Images do not seek to duplicate the exact visual appearance, but serve merely as a guide or point of reference.

All GH Commercial Woven Carpets must be installed in accordance with the latest AS2455 and the GH Commercial Carpet Installation Instructions.

~Test results and certificates are available on request.

\*This warranty is in addition to any rights consumers may have under Australian consumer laws. Terms and conditions apply - for full information in respect to the scope of the warranty please contact your GH Commercial Account Manager or our Head Office.

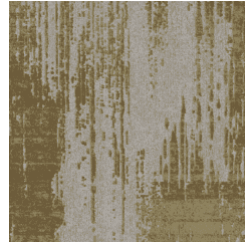
# Distressed



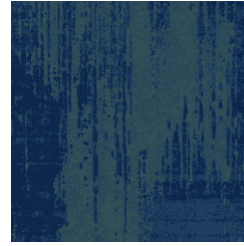
M01-2020-1223



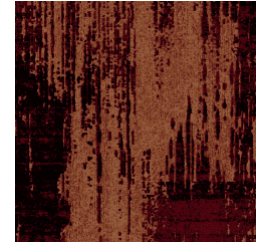
M01-2020-1224



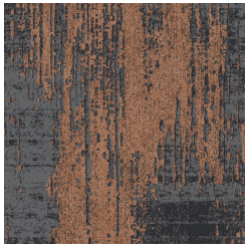
M01-2020-1225



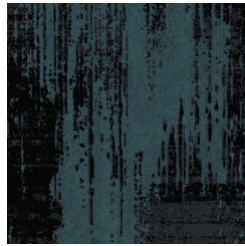
M01-2020-1232



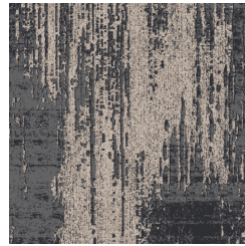
M01-2020-1228



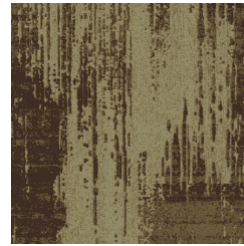
M01-2020-1227



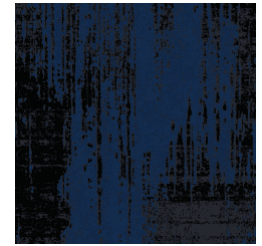
M01-2020-1230



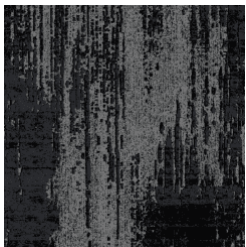
M01-2020-1229



M01-2020-1226



M01-2020-1231



M01-2020-1221



M01-2020-1222