

Oceanic Sheet



TECHNICAL SPECIFICATIONS

Collection:	Oceanic	Pile Weight:	576g/m ²
Country of Origin:	Australia	Backing:	Synthetic
Colours:	16 Standard	Installation Method:	Direct Stick Recommended
Yarn:	100% BCF Yarn Dyed Nylon	Type:	1.96m Wide Sheet
Surface Texture:	Patterned Cut Pile	Roll Width:	1.96
Gauge:	39.4/10cm (1/10th Gauge)	Secondary Backing:	Action Bac®
Product Thickness:	9mm	Pattern Repeat:	Pattern repeat varies per SKU. Contact your local GH Commercial Account Manager.

PERFORMANCE

Anti-Static:	(AATCC 134) <3.5KV at 21°C & 20% Relative Humidity
Flammability:	CRF 8.4kW/m ² (Direct Stick)#
Colourfast to light:	(ISO 105-B-02-1994) 5-6
Light Reflectance:	Available on Request
Stain Resistance:	Stain Warden®
Biocontaminant Control:	Bioshield® Antimicrobial Control
ACCS Rating:	Contract Extra Heavy Duty & Stairs (#20033)#
Contract Warranty:	10 Years available on request*
Smoke Value:	39% minutes (Direct Stick)
Recommended Adhesive:	Refer to our GH Commercial Adhesive Guide www.ghcommercial.com

SUSTAINABILITY

PVC Minimisation:	PVC Free
Indoor Air Quality:	Green Building Council compliant for VOC emission rate limits
Product Transparency:	Proudly Australian Made., Declare Red List Free, Contract Extra Heavy Duty and Suitable for stairs - 4 star., Environmental Certification Scheme Level 4
Green Star:	Environmental Certification Scheme (ECS). Level 4 Maximum Points - Certificate
Accreditation:	Manufactured under a quality, environmental and health and safety system certified and complying with ISO 9001, ISO 14001 and AS 4801 by accredited certification bodies.



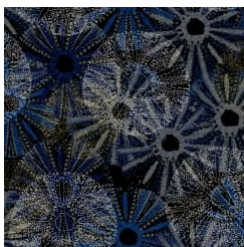
Declare.



Oceanic Sheet



0960
BRAMPTON



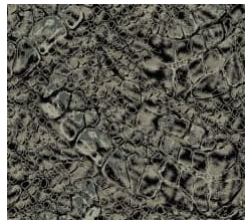
0880
URCHIN



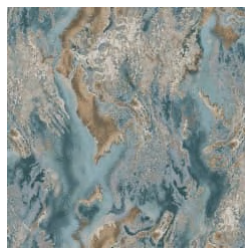
0850
PEARLSA



0740
SEASTAR



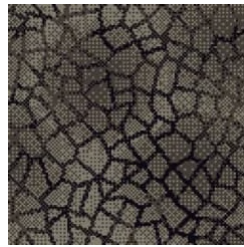
0560
TURTLE



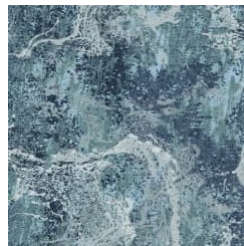
0830
DAYDREAM



0785
LINDEMAN



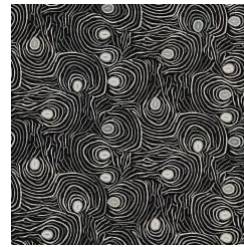
0580
SURFACE



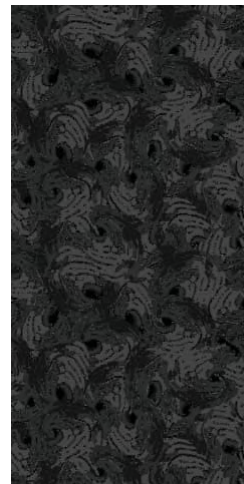
0840
BACKWASH



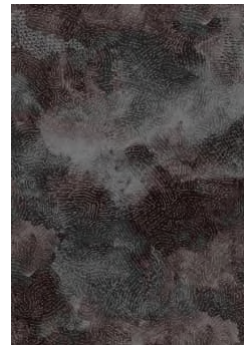
0590
ZOOKS



0790
ANGEL



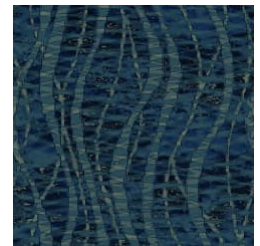
0780
BLACKFISH



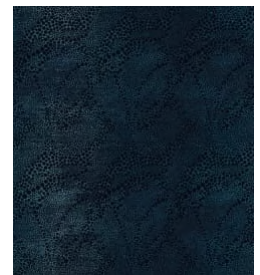
0775
BALLINA



0870
SAMPA



0860
AQUARIA



0890
ATOMIC

Specifications and colourations are subject to manufacturing tolerances. As part of the GH Commercial continuous improvement program, GH Commercial reserves the right to change the specifications of or delete colours of this product without notice. While all care is taken, product images may vary in colour due to possible printing process variations. Images do not seek to duplicate the exact visual appearance, but serve merely as a guide or point of reference.

All GH Commercial carpets must be installed in accordance with the latest AS2455 and any relevant GH Commercial Carpet Installation Instructions.*This guarantee is in addition to any rights consumers may have under Australian consumer laws. Terms and conditions apply - for full information in respect to the scope of the guarantee, please contact your GH Commercial Account Manager or our Head Office.