

Ruffled Blossom



TECHNICAL SPECIFICATIONS

Country of Origin:	Australia	Backing:	Synthetic
Colours:	4 Standard	Installation Method:	Direct Stick Recommended
Yarn:	100% BCF Yarn Dyed Nylon	Type:	1.96m Wide Sheet
Surface Texture:	Patterned Cut Pile	Roll Width:	1.96
Gauge:	47.2/10cm (1/12th Gauge)	Secondary Backing:	Action Bac®
Product Thickness:	7mm	Pattern Repeat:	1.96m (W) x 3.92m (L)
Pile Weight:	576g/m ²		

PERFORMANCE

Anti-Static:	(AATCC 134) <3.5KV at 21°C & 20% Relative Humidity
Flammability:	Meets the requirements of NCC Spec. C1.10 relating to fire hazard properties for flooring in Class 2-9 buildings~
Colourfast to light:	(ISO 105-B-02-1994) 5-6
Light Reflectance:	Available on Request
Stain Resistance:	Stain Warden®
Biocontaminant Control:	Bioshield® Antimicrobial Control
ACCS Rating:	Contract Extra Heavy Duty & Stairs~
Contract Guarantee:	10 Years available on request*
Recommended Adhesive:	Refer to our GH Commercial Adhesive Guide www.ghcommercial.com

SUSTAINABILITY

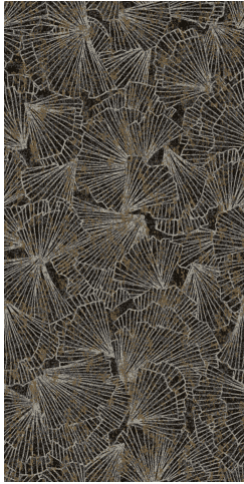
PVC Minimisation:	PVC Free
Indoor Air Quality:	Green Building Council Compliant for VOC emission rate limits
Product Transparency:	Proudly Australian Made., Declare Red List Free, Contract Extra Heavy Duty and Suitable for stairs - 4 star., Environmental Certification Scheme Level 4
Green Star:	Environmental Certification Scheme (ECS) Level 4 Maximum Points
Accreditation:	Manufactured under a quality, environmental and health and safety system certified and complying with ISO 9001, ISO 14001 and AS 4801 by accredited certification bodies.



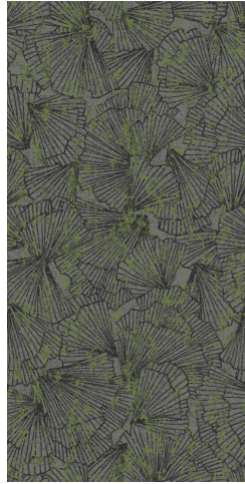
Declare.



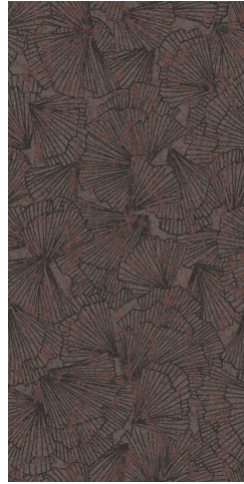
Ruffled Blossom



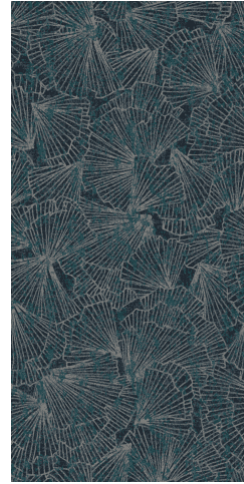
2021 109



2021 1094



2021 1093



2021 1092

Specifications and colourations are subject to manufacturing tolerances. As part of the GH Commercial continuous improvement program, GH Commercial reserves the right to change the specifications of or delete colours of this product without notice. While all care is taken, product images may vary in colour due to possible printing process variations. Images do not seek to duplicate the exact visual appearance, but serve merely as a guide or point of reference.

All GH Commercial carpet tiles and planks must be installed in accordance with AS2455 Parts 1 & 2 (latest version) and the GH Commercial Carpet Tile/Plank Installation Instructions.

Chair pads are recommended under office chairs with roller castors to preserve appearance retention, act as a deterrent toward delamination and to prevent premature or accelerated wear. Walk-off tiles from the Tuff Stuff II Collection are recommended at entryways to reduce soiling.

~Test results and certificates are available on request.

*Guarantee is in addition to any rights consumers may have under Australian consumer laws. Terms and conditions apply - for full information in respect to the scope of the guarantee please contact your GH Commercial Account Manager or our Head Office.