

Installation Instructions

Carpet Plank

These GH Commercial Carpet Plank Installation Guidelines should be reviewed by contract installers prior to commencement of works on site. All installation should be in accordance with the latest AS2455.1 and AS2455.2. Should the installer(s) have any queries in relation to the below recommendations, please contact your commercial representative. These installation guidelines cover all brands of carpet planks in the GH Commercial portfolio (including products branded Godfrey Hirst, Feltex, Mohawk Group and IVC Commercial).

Standard Installations

PRE-LAYING CHECKS

It is the flooring contractor's responsibility to verify that the product supplied is the correct product, colour and quantity for the project, prior to installation. GH Commercial will not be responsible for any visible defects after the carpet has been installed.

GH Commercial also recommended that the flooring contractor confirm with their client the required installation style. Some plank patterns may require individual planks be repositioned to avoid dark or light lines occurring at the seams. This is not a manufacturing defect.

Note: Cut pile planks will naturally display a greater degree of shade change when installed using non-directional installation styles.

SITE TESTING AND CONDITIONING

Concrete sub floors must be tested for moisture in accordance with the latest AS2455.1 and AS2455.2 using the "hood method" for RH testing. All Enviro Bac®, Enviro Bac Plus®, EcoFlex NXT and EcoFlex Matrix backed carpet planks are guaranteed to

perform up to an RH level of 80% and a pH level between 5 and 12 without the use of a moisture barrier. For EcoFlex ICT installations, pH level should be between 5 and 9. If the RH level exceeds 80% or the pH level exceeds 12 (or 9 for EcoFlex ICT products), please contact your local commercial representative prior to commencing installation.

Carpet planks (and any adhesives if being used) must be allowed to condition on site for a minimum period of 24 hours, at a minimum temperature of 15°C and a maximum temperature of 35°C. The temperature must remain within this range for the entire installation period and a minimum of 48 hours after installation completion. The relative humidity of the area where the planks are to be installed must not exceed 75% or fall below 30%.

FLOOR PREPARATION/ADHESIVE RECOMMENDATIONS (IF APPLICABLE)

See appropriate instructions below depending upon whether you are installing planks with flooring adhesive or using the FlexLok® tab system.

INSTALLATION PROCEDURE

Directional arrows are printed on the back of all planks. It is the responsibility of the installation contractor to confirm the required installation method/direction with the client.

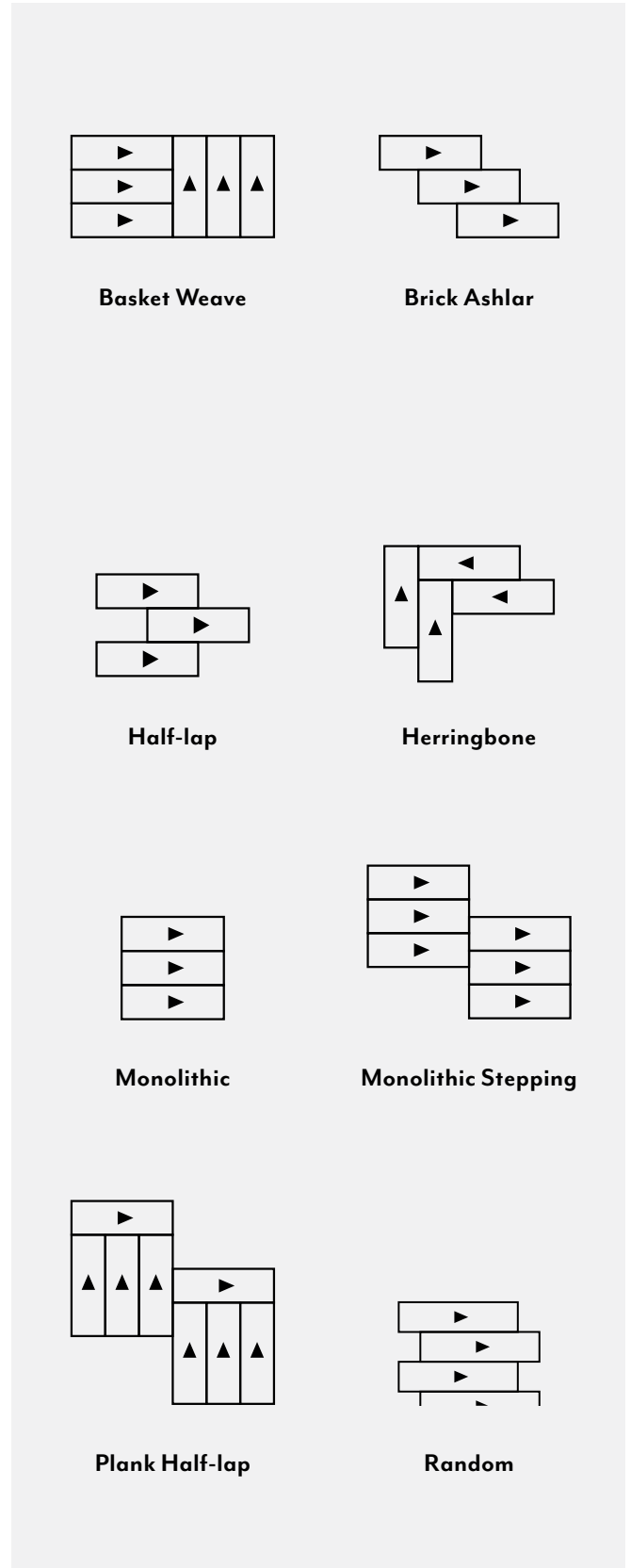
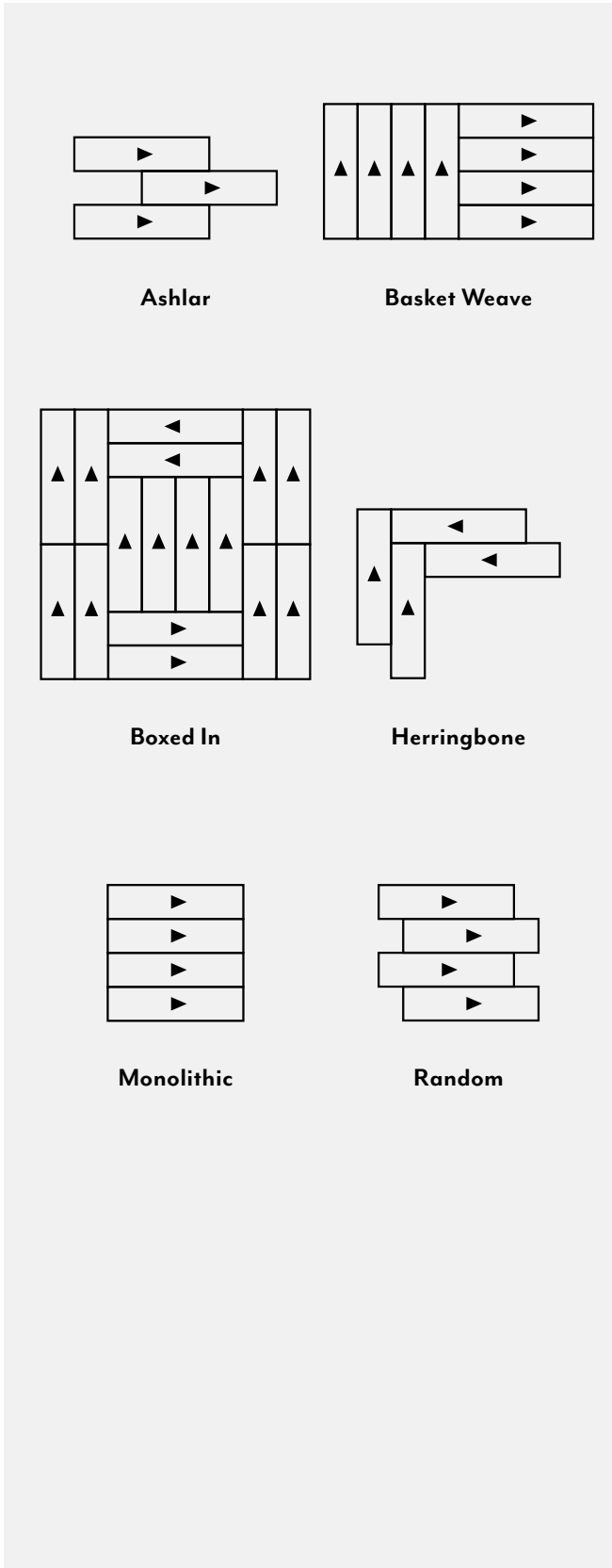
Carpet planks increase the number of pattern layout options available. Please refer to either the specific product specifications or the Project Specifications in relation to the direction of the installation.

Seams may be more or less apparent dependant on installation method. Direction of the installation will not affect the performance of the product.



Below are some example installation layouts for 250mm x 1,000mm sized planks:

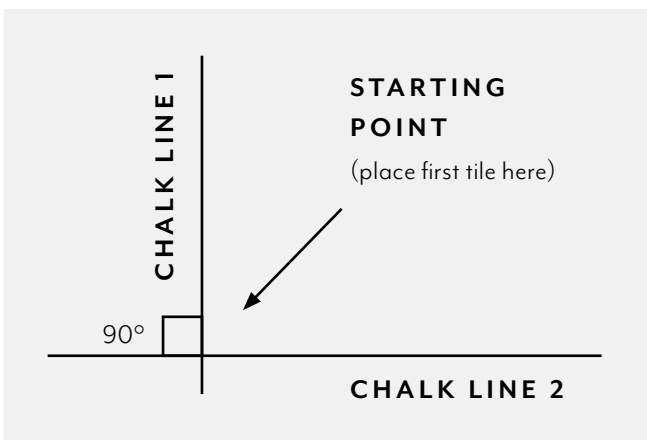
Below are some example installation layouts for 304.8mm x 914.4mm planks:



INSTALLATION INSTRUCTIONS

Installation should commence at the intersection of two chalk lines at 90° as shown in Diagram 1 below. Chalk lines must be as close as practicable to the centre of the room/area, running parallel to the longest wall. It may be necessary to shift the centre line to ensure border planks are a minimum of ½ width, unless otherwise specified in the overall design scheme.

Installation must continue until the completion of a quadrant prior to moving onto another adjoining quadrant. Installing planks using the pyramid method allows multiple alignment checks.



Slide planks into position to prevent yarn from being trapped between them. Trapped yarn may adversely affect the overall appearance of the installation and cause alignment problems.

Planks must be installed using an even tension. Space gained during installation should equal 5mm measured over 11 planks (10 joins). If sufficient space is not maintained, peaking and buckling may occur.

CUTTING

Carpet planks must be cut from the backing side using a straight edge. Templates should be utilised around columns/curved areas etc.

POST INSTALLATION

It is recommended that plywood be placed over planks during the removal or replacement of furniture or any heavy objects within 24 hours of the installation. Should plastic sheeting be required post installation it is the responsibility of the contractor should any condensation occur.

GH Commercial carpet planks are not recommended for use on a separate underlay. We cannot guarantee the stability or performance of planks if laid on a separate underlay. GH Commercial is not responsible for subfloor conditions. It is the responsibility of the installer to achieve a successful installation.

Adhesive Installations

FLOOR PREPARATION

Sub floor must be dry, free of dust, dirt, oil, grease, paint or any other materials which could adversely affect the adhesion of carpet planks to the floor. The sub floor must be level and smooth. Depressions and cracks must be filled using an approved levelling compound in accordance with the manufacturer's instructions. All protrusions must be levelled.

High porosity floors must be primed in accordance with the latest AS2455.1. Roberts 400 Floor and Wall Primer or their equivalent are recommended. It is the responsibility of the installation contractor to apply an appropriate primer prior to commencement of carpet installation.

Raised access floor panels must be secure, smooth and level and gaps between panels must not exceed 1.6mm. To minimise air-floor leakage and maximise occupant comfort and operational costs, it is recommended all plank products be installed "Off Grid" from the access panel seams.

Timber sub floors must be prepared utilising a hard underlay in accordance with the manufacturer's instructions. In accordance with the latest AS2458 and/or BS1142 reduced density or medium density fibre board types MDF and MDFMR or medium density fibrous cement sheet is acceptable.

Underfloor Heating must be switched off 48 hours prior to installation and not turned back on for a minimum of 48 hours after completed installation. Turning heating elements back on prior to the 48 hour curing time may affect the performance of the adhesive. Heating surface temperature must not exceed 27°C.

Healthcare facilities may require the sub floor to be sealed. Products such as Roberts Medi-Seal Plus or equivalent, used in accordance with the manufacturer's instructions, are recommended.

ADHESIVE RECOMMENDATION / APPLICATION

Roberts 444 solvent free, pressure sensitive adhesive to be used in accordance with the manufacturer’s instructions is recommended. Should the surface RH exceed 70% when tested in accordance with AS/NZ 2455 Parts 1 + 2 using the hood method, then Roberts 444 solvent free pressure sensitive adhesive, must be used. According to the adhesive manufacturer, Roberts 444 adhesive can be applied to concrete substrates with moisture contents up to 95% RH using an in-situ probe testing method and the adhesive can be used on concrete substrates with high PH readings of up to 12. All instructions provided by the adhesive manufacturer must be followed. Application rates must be determined by the installation contractor as this will be subject to subfloor conditions. For further information regarding application rates, recommendations and warranties, please contact your adhesive manufacturer.

All our carpet planks require 100% application of adhesive.

Application of adhesive to the sub floor is to be via either a long nap roller or a V notched trowel. Application rates will vary dependant on the porosity of the sub floor and should be in accordance with the manufacturer’s instructions.

It is the installer’s responsibility to ensure the sub floor condition and adhesive application rate allows the carpet planks to be securely stuck yet easily uplifted as required.

Adhesive must be given sufficient time to ‘tack off’ and almost dry prior to laying of carpet planks. If the product is laid into wet adhesive, a permanent bond may occur.

FlexLok® Tab Installations

FLEXLOK® TABS ARE DESIGNED FOR INSTALLATION WITHOUT ADDITIONAL ADHESIVE. This installation system will only perform properly when the subfloor preparation and installation guidelines outlined below are followed.

FLOOR PREPARATION

Sub floor must be dry, free of dust, dirt, oil, grease, paint or any other materials which could adversely affect the adhesion of the carpet planks to the floor. Do not use solvents to clean the floor. Do not use oil based sweeping compounds.

The sub floor must be level and smooth. Depressions and cracks must be filled using an approved levelling compound in accordance with the manufacturer’s instructions. Gypsum based compounds are not recommended. Patched areas may need to be primed with an approved primer (consult levelling compound manufacturer for requirements). Do not install over resin or silicate based curing compounds.

All protrusions must be levelled.

Sealing or other post treatment of concrete floors is to be determined by the installation contractor. In general properly cured steel trowel finished concrete requires no additional treatment. Excessively porous or dusty concrete slabs are the only exception.

Note: When non-asbestos containing as cut-back or any incompatible adhesive is present, existing adhesive has evidence of plasticiser migration or EcoFlex ICT (PVC) products are being installed, the existing adhesive must be properly removed, and an appropriate sealer must be applied over the adhesive residue.

Raised access floor panels must be secure, smooth and level and gaps between panels must not exceed 1.6mm. To minimise air-floor leakage and maximise occupant comfort and operational costs, it is recommended all plank products be installed “Off Grid” from the access panel seams.

APPLICATION RATE

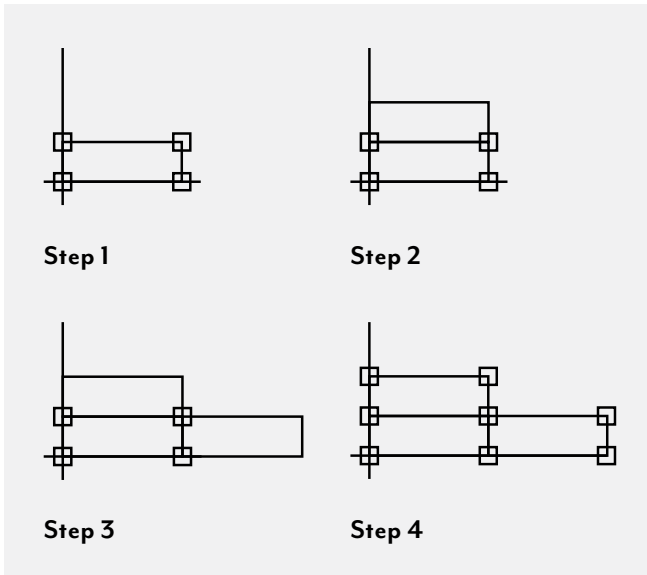
| Installation of carpet planks | Coverage (m2/box) |
|---|-------------------|
| Monolithic | Approx. 90 |
| Basketweave & Herringbone | Approx. 50 |
| Half-Lap, Random, Brick Ashlar, Monolithic Stepping | Approx. 80 |

TAB INSTALLATION

1. Start from the intersection point in the centre of the floor with the first plank (as per steps shown below). Place a tab under each edge of the plank at the corners, leaving ¾ of the tab exposed.
2. Carefully insert the second plank in place then firmly press the plank into the tab.



3. Continue with the third plank, following the pyramid installation pattern. Check to ensure planks are properly aligned at the edges during the installation.
4. Place tabs under the edges of the second and third plank.

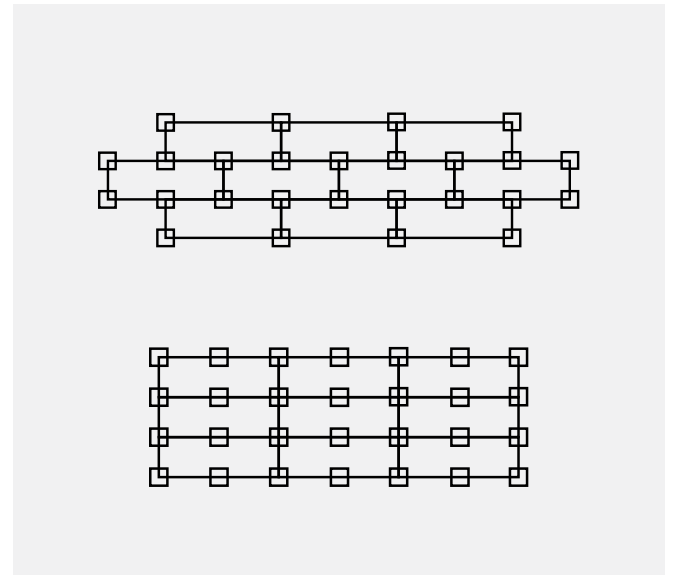


5. Continue with the pyramid method until the entire area is completed.
6. All carpet planks must be rolled with a 35 – 45kg roller

Note: Before pressing the plank into the adhesive tab, fit the planks together, being careful not to trap face yarns between or under the edges of the plank and/or crease the tab under the plank.

TAB PLACEMENT

Tabs must be placed on every corner of the plank and in the middle of the long edge of the plank. A tab is also required at any seam next to the wall or transition. See diagrams below.



ADDITIONAL FLEXLOK® INFORMATION

- FlexLok® is not recommended for stairs.
- FlexLok® is not recommended for ramps, inclines or under heavy rolling loads. Pressure sensitive adhesives must be used in these areas.
- FlexLok® is not recommended for carpet over carpet installations.
- If replacing a damaged or heavily soiled plank, a new FlexLok® tab must be used.

IMPORTANT WARNING: These GH Commercial Carpet Plank Installation Guidelines are intended to assist in achieving an optimum installation. Any variation to the recommendations above by the installation contractors on site may affect the warranty. For further information, please contact your local Commercial Sales representative.