

TECHNICAL SPECIFICATIONS

Country of Origin:	New Zealand	Backing:	Jute
Colours:	6 Standard	Installation Method:	Conventionally Laid
Yarn:	100% Wool	Type:	Broadloom Carpet
Surface Texture:	Level Loop Pile	Roll Width:	3.66
Gauge:	31.5/10cm (1/8th Gauge)	Secondary Backing:	Jute
Product Thickness:	9mm	Pattern Repeat:	Not Applicable
Pile Weight:	1360g/m ²		

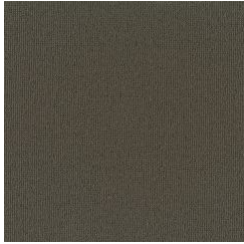
PERFORMANCE

Anti-Static:	(AATCC 134) <3.5KV at 21°C & 20% Relative Humidity
Flammability:	CRF 8.4kW/m ² (Conventionally Laid)~
Light Reflectance:	Available on Request
Stain Resistance:	Natural Wool Fibre Stain Resistance
ACCS Rating:	Contract Heavy Duty & Stairs (#22149)~
Contract Warranty:	7 Year Contract Guarantee Available on Request*
Smoke Value:	63% minutes (Conventionally Laid)

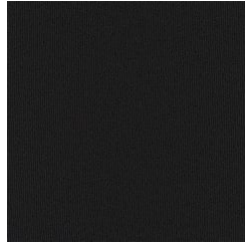
SUSTAINABILITY

PVC Minimisation:	PVC Free
Indoor Air Quality:	Green Building Council Compliant for VOC emission rate limits
Product Transparency:	Quality NZ Made Carpet, Residential Extra Heavy Duty and Suitable for Stairs - 6 star., Contract Heavy Duty and Suitable for Stairs - 3 star., Environmental Certification Scheme Level 4
Green Star:	Environmental Certification Scheme (ECS). Level 4 Maximum Points - Certificate #22149
Accreditation:	Manufactured under a quality and environmental system certified and complying with ISO 9001 and ISO 14001 by an accredited certification body.

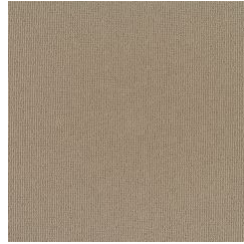




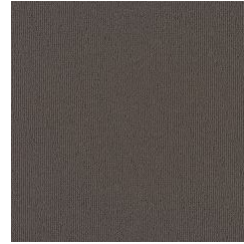
0045
TOADSTOOL



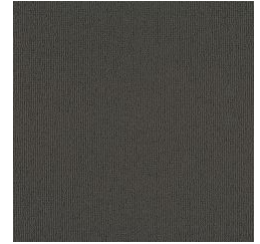
0096
BLACK PEPPER



0016
PORTLAND STONE



0069
SHADOW TAUPE



0093
TARMAC



0079
EARTH BROWN

Specifications and colourations are subject to manufacturing tolerances. As part of the GH Commercial continuous improvement program, GH Commercial reserves the right to change the specifications of or delete colours of this product without notice. While all care is taken, product images may vary in colour due to possible printing process variations. Images do not seek to duplicate the exact visual appearance, but serve merely as a guide or point of reference.

All GH Commercial carpets must be installed in accordance with the latest AS2455 and any relevant GH Commercial Installation Instructions. ~Test results and certificates are available on request. *This warranty is in addition to any rights consumers may have under Australian consumer laws. Terms and conditions apply - for full information in respect to the scope of the warranty, please contact your GH Commercial Account Manager or our Head Office.