

## TECHNICAL SPECIFICATIONS

|                    |                          |                      |                       |
|--------------------|--------------------------|----------------------|-----------------------|
| Country of Origin: | New Zealand              | Pile Weight:         | 1220g/m <sup>2</sup>  |
| Colours:           | 4 Standard               | Backing:             | Synthetic             |
| Yarn:              | 100% Solution Dyed Nylon | Installation Method: | Conventionally Laid   |
| Surface Texture:   | Cut Pile Twist           | Type:                | Residential Broadloom |
| Gauge:             | 39.4/10cm (1/10th Gauge) | Roll Width:          | 3.66                  |
| Product Thickness: | 9mm                      | Secondary Backing:   | Synthetic             |

## PERFORMANCE

|                    |   |
|--------------------|---|
| Anti-Static:       | (AATCC 134) <3.5KV at 21°C & 20% Relative Humidity                  |
| Flammability:      | CRF 7.6kW/m <sup>2</sup> (Direct Stick)~                            |
| Light Reflectance: | Available on Request  |
| Stain Resistance:  | Stain Warden®   |
| ACCS Rating:       | Residential Extra Heavy Duty - 6 Star, Contract Heavy Duty - 3 Star |
| Contract Warranty: | 5 Year Contract Guarantee Available on Request*                     |
| Smoke Value:       | 88% minutes (Direct Stick)  |

## SUSTAINABILITY

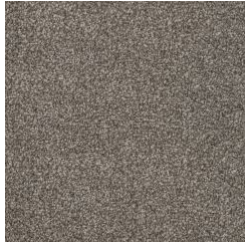
|                     |  |
|---------------------|--|
| PVC Minimisation:   | PVC Free   |
| Indoor Air Quality: | Green Building Council Compliant for VOC emission rate limits  |
| Green Star:         | Environmental Certification Scheme (ECS). Level 4 Maximum Points - Certificate #13215  |
| Accreditation:      | Manufactured under a quality and environmental system certified and complying with ISO 9001 and ISO 14001 by an accredited certification body. |



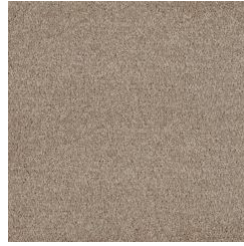
# Cable Bay



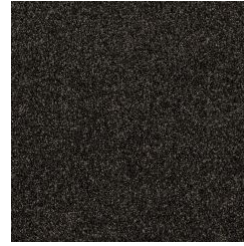
785  
DARTMOOR



745  
STONE



540  
COCKLE



780  
COAL

Specifications and colourations are subject to manufacturing tolerances. As part of the GH Commercial continuous improvement program, GH Commercial reserves the right to change the specifications of or delete colours of this product without notice. While all care is taken, product images may vary in colour due to possible printing process variations. Images do not seek to duplicate the exact visual appearance, but serve merely as a guide or point of reference.

All GH Commercial carpets must be installed in accordance with the latest AS2455 and any relevant GH Commercial Installation Instructions. –Test results and certificates are available on request. \*This warranty is in addition to any rights consumers may have under Australian consumer laws. Terms and conditions apply - for full information in respect to the scope of the warranty, please contact your GH Commercial Account Manager or our Head Office.