

TECHNICAL SPECIFICATIONS

Country of Origin:	Australia	Backing:	Synthetic
Colours:	9 Standard	Installation Method:	Conventionally Laid
Yarn:	100% Solution Dyed Nylon	Type:	Residential Broadloom
Surface Texture:	Patterned Textured Loop Pile	Roll Width:	3.66
Gauge:	25.2/10cm (5/32nd Gauge)	Secondary Backing:	Synthetic
Product Thickness:	9.5mm	Pattern Repeat:	1.5cm (w) x 3.0cm (l)
Pile Weight:	1085g/m ²		

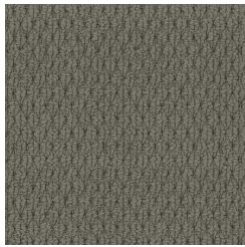
PERFORMANCE

Anti-Static:	(AATCC 134) <3.5KV at 21°C & 20% Relative Humidity
Flammability:	CRF 3.2Kw/m2 (Conventionally Laid)~
Light Reflectance:	Available on Request
ACCS Rating:	Residential Extra Heavy Duty - 6 Star, Contract Medium Duty - 2 Star
Contract Warranty:	5 Year Contract Guarantee Available on Request*
Smoke Value:	241% minutes (Conventionally Laid)

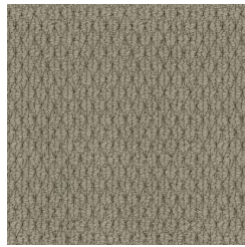
SUSTAINABILITY

PVC Minimisation:	PVC Free
Indoor Air Quality:	Green Building Council Compliant for VOC emission rate limits
Green Star:	Environmental Certification Scheme (ECS). Level 4 Maximum Points - Certificate #19147
Accreditation:	Manufactured under a quality, environmental and health and safety system certified and complying with ISO 9001, ISO 14001 and AS 4801 by accredited certification bodies.

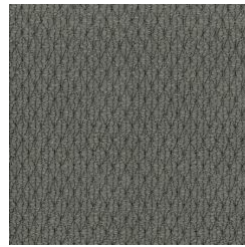




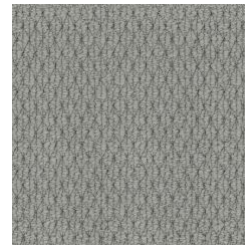
0094
COLONIAL



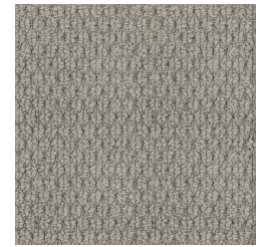
0013
MOROCCO



0096
MOSQUE



0090
MEDINA



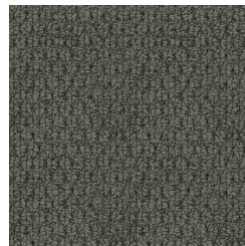
0091
CORNICHE



0097
ARTISAN



0011
ATLANTIC



0095
SULTAN



0098
RABAT

Specifications and colourations are subject to manufacturing tolerances. As part of the GH Commercial continuous improvement program, GH Commercial reserves the right to change the specifications of or delete colours of this product without notice. While all care is taken, product images may vary in colour due to possible printing process variations. Images do not seek to duplicate the exact visual appearance, but serve merely as a guide or point of reference.

All GH Commercial carpets must be installed in accordance with the latest AS2455 and any relevant GH Commercial Installation Instructions. ~Test results and certificates are available on request. *This warranty is in addition to any rights consumers may have under Australian consumer laws. Terms and conditions apply - for full information in respect to the scope of the warranty, please contact your GH Commercial Account Manager or our Head Office.